



## Elevations / Floor Plans Floor Plan 6



A simple yet detailed design, the exterior of this home boasts keystone lintels, muntin windows, French-style shutters and a stucco facade. Volume ceilings in all rooms, arches, plant shelves and look-over walls make this home feel much larger. A large transom above the front double doors floods the foyer with natural light. Sleeping quarters take up residence on the right side of the plan, including a large master bedroom with a full bath. The spacious dining/living room is complemented with skylights.

### Features

Primary Style: New American  
Other style influences: Ranch  
Mediterranean

Main Level: 1,581  
Total: 1,581 Sq. Ft.

Bedrooms: 3  
Baths: 2

Width: 40'  
Depth: 60'  
Stories: 1  
Garage Bays: 2

---

**Mark LaPoint**  
Project Manager  
Heritage Development Group  
970-389-2614

**Dotti Presley**  
Broker  
Meadow Creek Realty  
956-239-1839

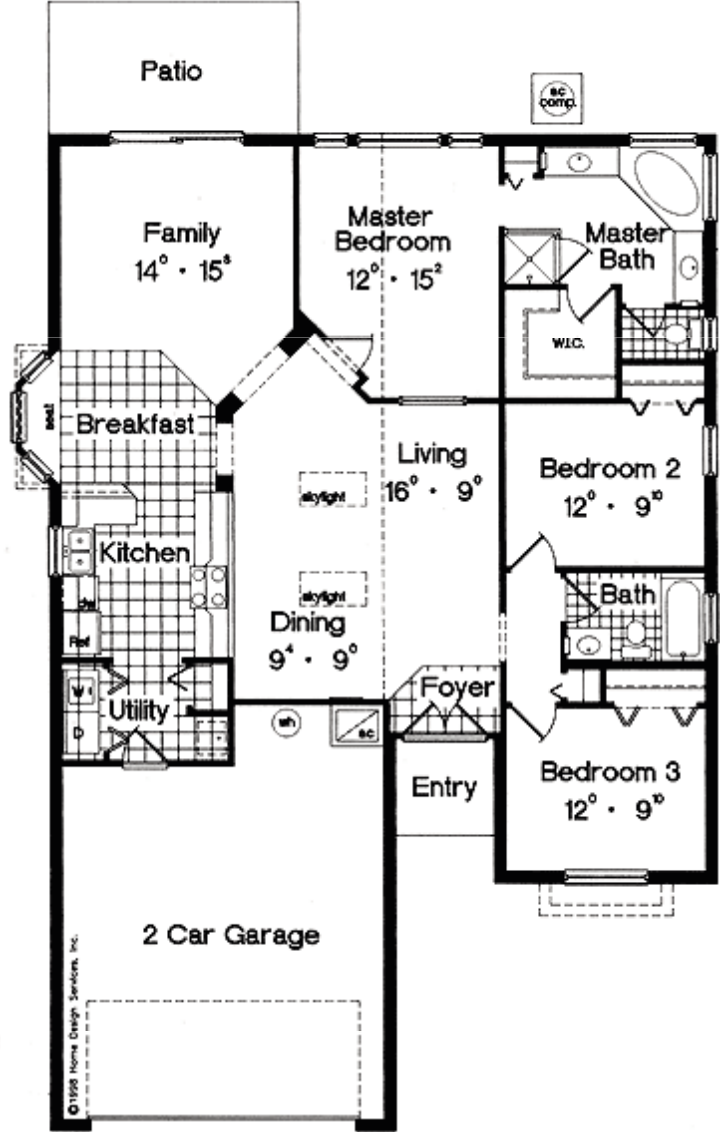
**Kellie Johnsick**  
Builders  
Superior Real Estate Solutions  
817-874-6367



# Elevations / Floor Plans

## Floor Plan 6

Main Level



©1998 Home Design Services, Inc.